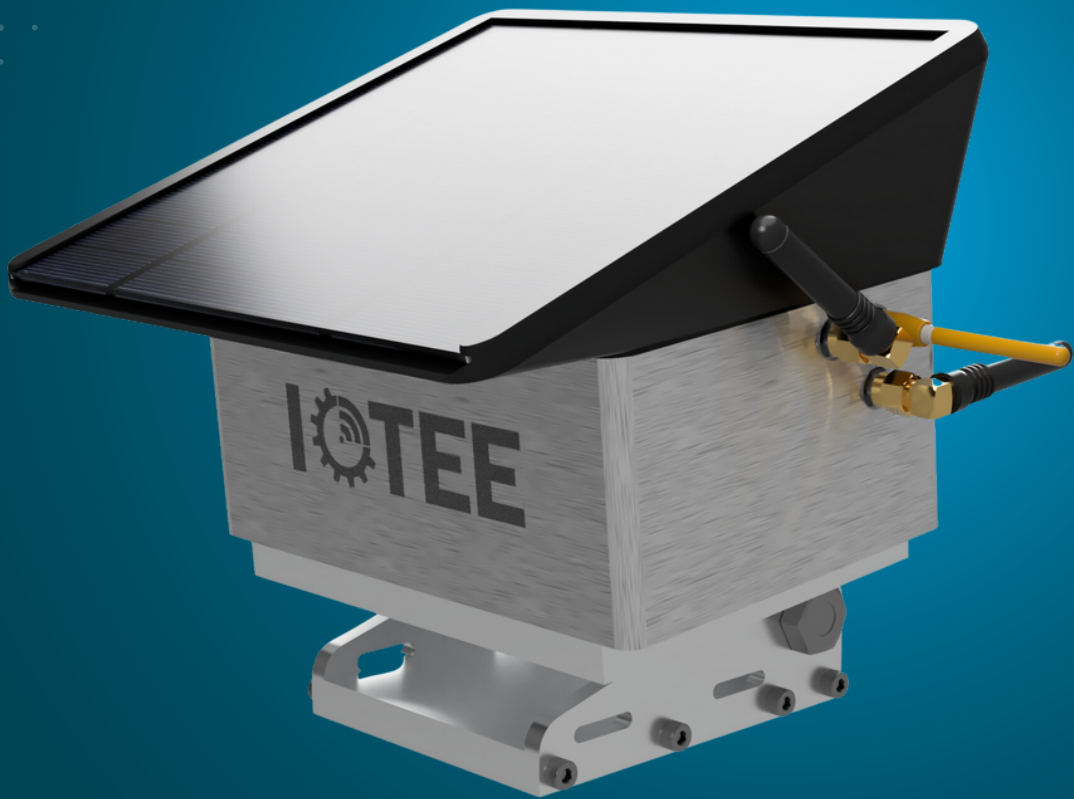


DATA SHEET

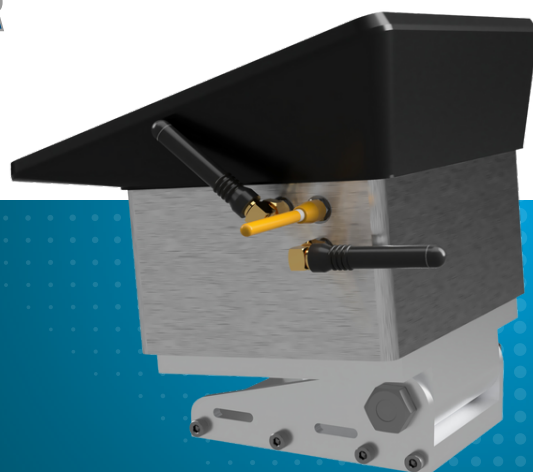


**INCLINATION, VIBRATION,
AND OSCILLATION SPEED SENSOR**

IOTIV

INCLINATION, VIBRATION, AND OSCILLATION SPEED SENSOR

IOTIV



- Sensor for measuring tilt, vibration, oscillation speed, and temperature
- Built-in GPS and 3 independent thermometers
- Wireless communication using LoRa + Wi-Fi
- Robust design
- Extremely high accuracy, sensitivity and repeatability
- Rechargeable accumulators, solar panel, backup battery
- Accredited calibration - Metrological compliance with Czech Metrology Institute

SPECIFICATIONS

THREE-AXIS VIBRATION SPEED SENSOR

Range:	from 0.5 Hz to 200 Hz
Resolution:	5 nm/s
Maximum measurement frequency:	6 kHz

TWO-AXIS INCLINOMETER

Standard range:	from -30° to +30°
Full range (on request):	360°
Repeatability:	0.001% of the range
Accuracy:	0.0001° or 1.72 $\mu\text{m}/\text{m}$
Temperature shift:	0.1% of the range
Maximum measurement frequency:	0.5 Hz

THREE-AXIS ACCELEROMETER

Configurable range:	$\pm 2 \text{ g}$, $\pm 4 \text{ g}$, $\pm 8 \text{ g}$, $\pm 6 \text{ g}$
Maximum measurement frequency:	6 kHz
Resolution:	0.005% of the range

OTHER

Dimensions with antenna (LxWxH):	160 mm x 110 mm x 115 mm
Weight:	2.2 kg
Temperature range:	from -20 °C to +60 °C
Environment resistance:	Complete protection against dust and water splash resistance
Battery life:	without a solar panel: 5 years with a solar panel: >15 years